



PROFESSIONAL SOFTWARE FOR CABLE CAR OPERATORS

With the operating and maintenance software
SAMBESI you keep track of your installations





With **SAMBESI**,
paperless documentation.

SAMBESI is a professional software that helps you to control the flood of data for the entire maintenance process. You increase the availability of your installations, perform maintenance more efficiently and thus reduce costs. In addition, the know-how about the condition of the installations remains within your company, accessible anytime.

DUE DILIGENCE DIGITIZED

Fulfilling due diligence is a major challenge for cable car operators. Accordingly, all performed maintenance work must be accurately documented and easily retrievable.

With **SAMBESI** the operating and maintenance software, you keep track of your installations and report to the authorities at any time. The software shows you when and where to perform which tasks.

With **SAMBESI** Mobile, you can easily edit on-site maintenance, record measured values, and add photos. This means that you have all documents and the complete installation status at your fingertips thanks to the mobile devices.

SAMBESI digitizes your work processes and is therefore the ideal application for cable car companies of any size.

ADMINISTRATION

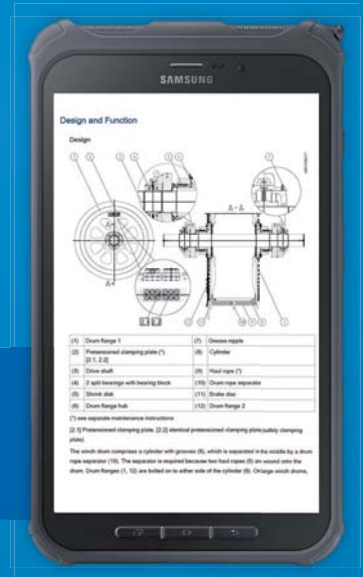
MANAGEMENT

In the management of your facilities, you are responsible for the full operation of cable cars, snow-making systems, restaurants, snow groomers and other infrastructure. The structure of your installations can be chosen to suit your requirements and adapted at any time.

DOCUMENTS

Add documents to your installation structure. By storing operating instructions, maintenance checklists, construction plans and pictures, you can keep track of the installation.

All documents can be downloaded to the tablet and are thus also available offline.



Sambesi

File Start Reporting

Installation management Logbook configuration Spare parts NFC Mutations Save New element Copy element Insert element Move element Delete element Export elements Import elements Refresh Language: Is Standard Copy text from standard Translation

Administration

- Scenic World
 - Scenic World
 - 60CAC Scenic Skyway
 - 1 Ropes and rope connections
 - 1.1 Haul rope
 - 2 Drive units and brakes
 - 2.1 Emergency brake (brake caliper)
 - 4 Center
 - 5 Electrical devices
 - 7 Infrastructure
 - 14FUL Scenic Railway
 - Pite and rescue service
 - Maintenance Building
 - Care / Devices
 - PB 600 Polar (10099)

Informations

Scenic World:60-CAC Scenic Skyway

Installation definition

Node ID:

Installation type:

Installation description:

Installation no.:

Abbreviation for installation:

Designation:

Classification No.:

Note:

Inspection post:

Sector:

End of operations date:

Settings

User visibility:

In the main cockpit: ☒ Visible

Structure of the installations: ☒ Display by numbers ☐ Display by abbreviation (AKS-Code)

Mobile: ☐ Plant maintenance on the tablet only available online and through component selection

Documents of the installation description:

| Type | Designation | Keywords | Link |
|------|-------------|----------|------|
| | | | |

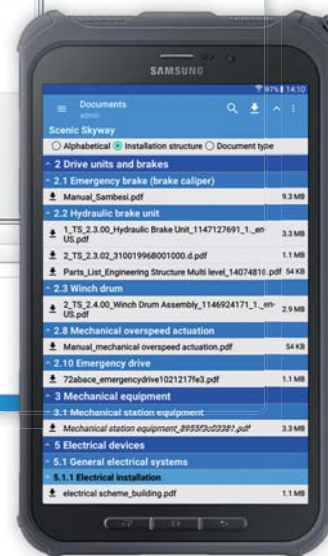
Properties:

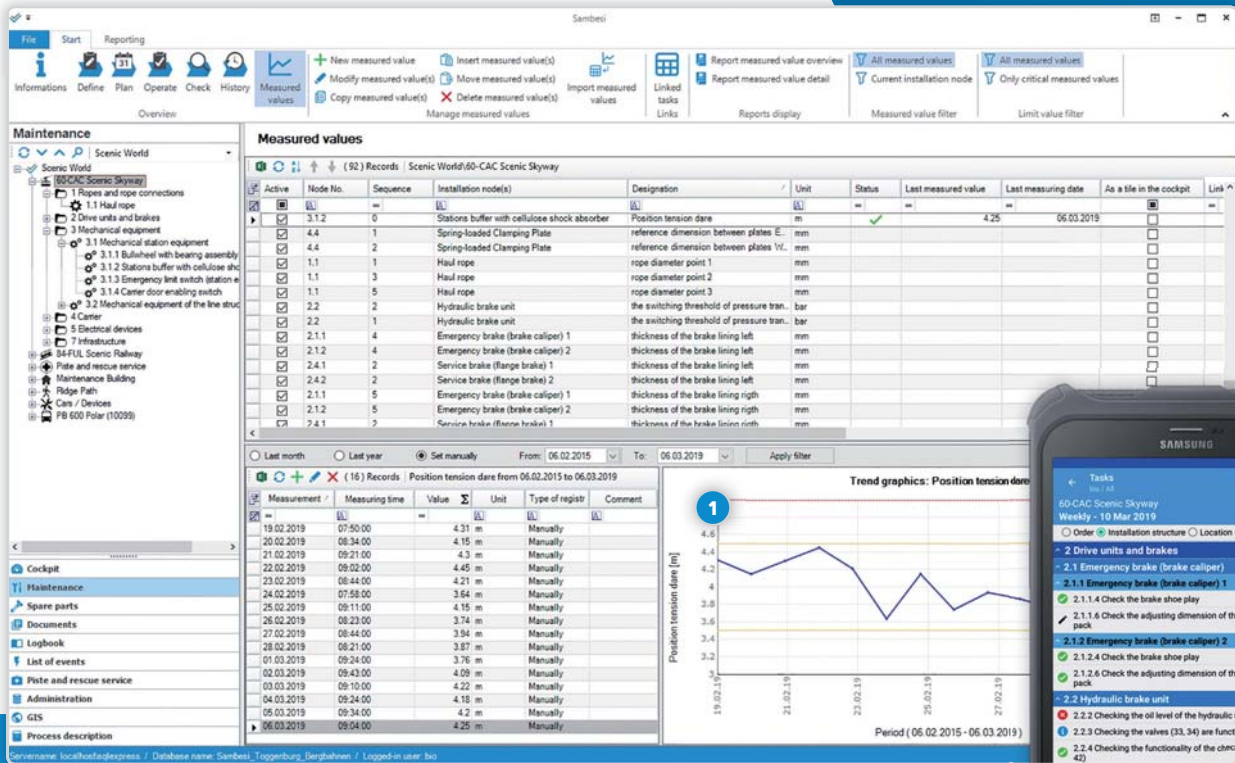
| Concealed | Designation | Value |
|--------------------------|-------------|-------|
| <input type="checkbox"/> | Capacity | 160 |
| <input type="checkbox"/> | Year | 2009 |

Cockpit:

- Maintenance
- Spare parts
- Documents
- Logbook
- List of events
- Pite and rescue service
- Administration
- GIS
- Process description

SourceName: localtestadexpress / Database name: Sambesi_Toggenburg_Bergbahn / Logged in user: bio

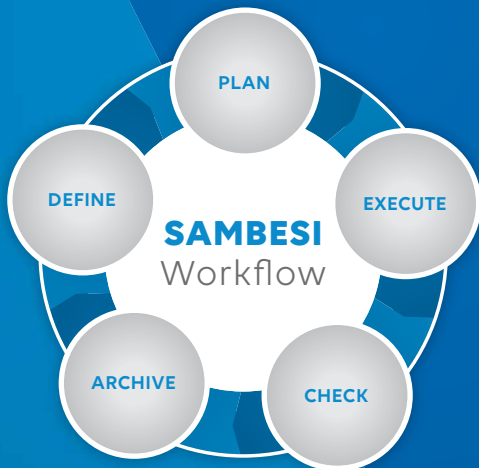




- 1 Working with measured values enables a quantitative assessment of the condition of the equipment and increases the quality of inspections.
- 2 The checklists can be edited on the tablet.

MAINTENANCE

The maintenance of your installation is a complex and extremely demanding task. The workflow integrated in SAMBESI enables the practical fulfillment of all activities.



DEFINE

Register installations and tasks and set their maintenance strategy.

PLAN

Generate checklists and resource requirements for operation and revision phases.

EXECUTE

Execute and document checklists and tasks.

CHECK

View and check performed checklists and tasks.

ARCHIVE

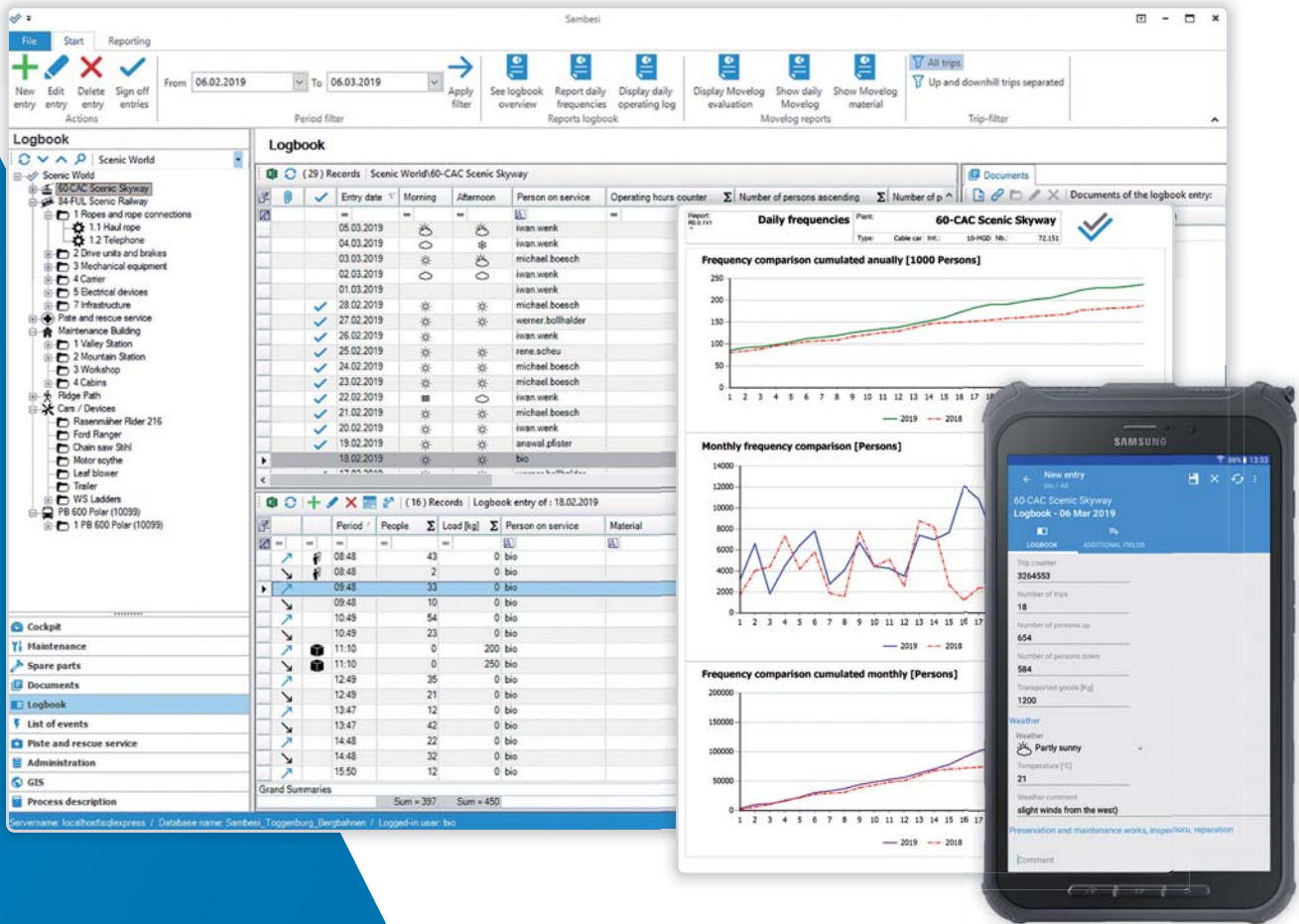
Analyze and archive targeted checklists and tasks. Cost control and reporting.

LOGBOOK

The time consuming process of manually recording transport statistics is eliminated. This is just one of the many advantages of the electronic operating log.

You will already record the number of transported persons and loads as well as document the days of operation with weather and comments. In **SAMBESI**, it's easier for you and you also have the opportunity to evaluate the collected data and to reuse them in the predefined reports.

Thanks to the logbook, you have the opportunity to record all trips separately with all the features and details. These can then conveniently be evaluated daily, monthly or for any period with a variety of reports.



The screenshot shows the Sambesi software interface. The top bar includes 'File', 'Start', and 'Reporting' menus. Below this is a toolbar with icons for adding, editing, and deleting events, along with filters for date, event type, and status. The main area is divided into two panes. The left pane, titled 'List of events', shows a tree view of the installation structure, including 'Scenic World', '60-CAC Scenic Skyway', and various equipment like '1 Ropes and rope connections', '2 Drive units and brakes', etc. The right pane, also titled 'List of events', displays a table of events for the '60-CAC Scenic Skyway' installation. The table has columns for 'Date of event', 'Event time', 'Event type', 'Installation node(s)', 'Course of events', 'Cause', and 'Measures taken'. A red circle with the number '1' highlights a row in the table. Below the table, there is a section for 'Documents of the event list entry' with columns for 'Type', 'Designation', 'Keywords', and 'Link'. A smartphone in the foreground displays a mobile version of the event list, with a red circle and the number '2' highlighting a row in the list.

1 An analysis of all events of one installation or the entire operation is done on the desktop and can be easily communicated to third parties via reports.

2 Events can also be recorded on site on the tablet, where the information is up-to-date and the easy to record.

LIST OF EVENTS

The recording of accidents, events and disturbances is the first step in ensuring they do not reoccur in future. Learn from history.

RECORDING

With the help of this module you can centrally record and evaluate all events around your installations. Disruptions, accidents and breakdowns are manageable and you can take measures to prevent such events.

REPORTING

SAMBESI also simplifies communication with authorities by allowing you to view and send recorded events in pre-integrated, official forms.

SPARE PARTS

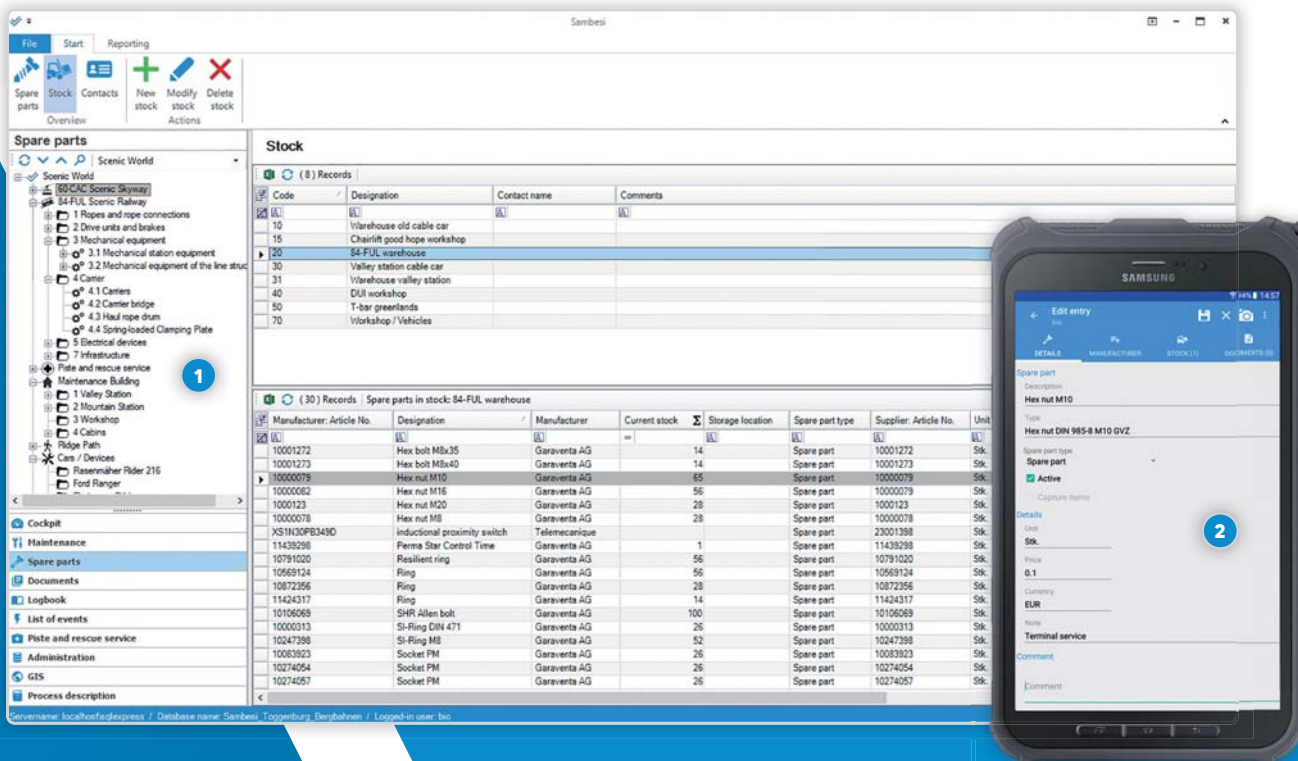
Spare parts management helps you to use your resources efficiently, makes it easy to predict the material required for maintenance and enables you to verify the components used.

STOCK MANAGEMENT

Spare parts can be assigned to warehouses and stock levels managed. The management of inventory becomes easy. You can also enter the manufacturers contact information, so that they are always accessible.

MAINTENANCE

You can enter spare parts directly when performing maintenance tasks. These spare parts are debited directly from the respective storage location.



- 1 Spare parts can be assigned directly to the installation structure. This simplifies the planning of replacement material during revision work.
- 2 Spare parts can be conveniently recorded and managed on the tablet. During repairs you can easily document your work.

Accidents

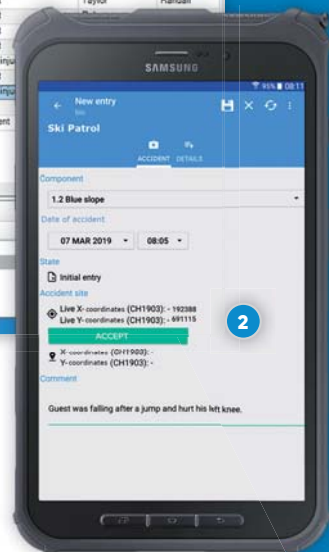
(19) Records / Scenic World/Piste and rescue service/1 Pistes

| Date of accident | Time of the accident | Installation node(s) | Status | Runway type | Course of events | Degree of injuries | First name | Surname |
|------------------|----------------------|----------------------|---------------------|-------------------------------------|----------------------------|--------------------|------------|---------|
| 06.03.2019 | 15:37:00 | Green slope | Initial entry | | Auto accident after jump | | | |
| 01.03.2019 | 15:49:00 | Yellow slope | In progress | Race track | Collision with person | | | |
| 03.02.2019 | 10:46:00 | Pistes | Initial entry | Street, parking | Auto accident without jump | Slightly hurt | Miley | Hart |
| 01.02.2019 | 15:55:00 | Pistes | Ready for transmis. | Snowpark, Boardercross, Hal. | Auto accident after jump | Moderately injured | Sean | Reeves |
| 16.01.2019 | 16:06:00 | Pistes | In progress | Snowpark, Boardercross, Hal. | Auto accident after jump | | | |
| 09.01.2019 | 15:59:00 | Footpath | Ready for transmis. | Footpath, hiking trail | Auto accident without jump | Unhurt | Sam | Lee |
| 06.01.2019 | 15:36:00 | Yellow slope | Transmission com. | Ski-lift | Auto accident after jump | Slightly hurt | Peter | Allen |
| 02.01.2019 | 18:40:00 | Black slope | Transmission com. | Toboggan run, piste | Auto accident after jump | Slightly hurt | Bob | Builder |
| 06.12.2018 | 14:43:00 | Pistes | In progress | | Collision with object | Seriously injured | | |
| 06.03.2018 | 15:29:00 | Red slope | In progress | Entry / exit of ski lift, chairlift | Auto accident without jump | Seriously injured | Dean | Potter |
| 06.03.2018 | 15:38:00 | Green slope | Initial entry | In the building (for example r. | Auto accident after jump | Slightly hurt | Taylor | Randall |
| 06.03.2018 | 11:57:00 | Pistes | Transmission com. | Free ski area | Auto accident after jump | Slightly hurt | | |
| 01.02.2018 | 12:33:00 | Pistes | Ready for transmis. | Toboggan run, piste | Auto accident without jump | Slightly hurt | | |
| 12.02.2018 | 09:30:00 | Red slope | In progress | Snowpark, Boardercross, Hal. | Auto accident after jump | Slightly hurt | | |
| 08.01.2018 | 11:32:00 | Red slope | Initial entry | Downhill route | Unknown | Moderately injured | | |
| 04.01.2018 | 16:07:00 | Pistes | Initial entry | Ski-lift | Collision with person | Slightly hurt | | |
| 06.11.2017 | 16:01:00 | Pistes | Ready for transmis. | Race track | Auto accident without jump | Moderately injured | | |
| 06.01.2017 | 10:44:00 | Pistes | Initial entry | Street, parking | | Illness | | |
| 01.01.2017 | 11:42:00 | Bobsled track | Initial entry | Footpath, hiking trail | Auto accident after jump | Fatal accident | | |

Documents of the accident report

| Type | Designation | Keywords | Link |
|-----------------|-------------------------|----------|-------------------------|
| Accident report | Accident wide angle PNG | | Accident wide angle PNG |

Servername: localhost/afsdress / Database name: Sambesi_Toggenburg_Bergbahnen / Logged-in user: bio



- 1 In the installation structure, you can map your slopes as usual and classify them with the appropriate categorization.
- 2 The first accident recording takes place directly on the tablet on the spot. The location of the accident is localized via GPS and voice recordings enable fast data capturing.

SKI PATROL

The new module Ski Patrol adopts SAMBESI's proven qualities into the fields of accident recording, slope control and explosives management.

ACCIDENTS

First-time logging on the scene of an accident using a smartphone or tablet greatly simplifies accident documentation. Capture the coordinates, images and more information in a few clicks on-site and refine the information later on the desktop.

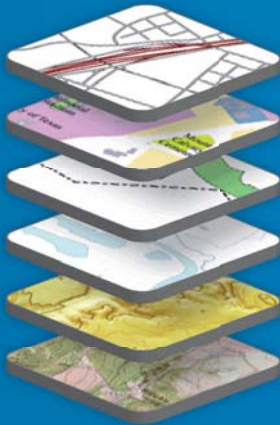
SLOPE CONTROL AND EXPLOSIVE MANAGEMENT

Due to the duty of care, the slope service has the task of securing, opening and closing the slopes and to document this accordingly. With the new module, these activities are easily digitized.

Explosives can be easily managed and their use made comprehensible. A complete daily report is available to you with one click.

GIS

Fully integrated in SAMBESI, geodata can be displayed and managed. In addition to intelligent document management, you also have access to public information from government agencies.



LAYER CONCEPT

The various data sources can easily be switched on and off as individual layers. Access to the public data takes place online. On request, we can digitize and host GIS data for you.

- **Installations (shafts, wells, reservoirs, pipes)**
- **Layer of authorities (properties, hunting grounds, permafrost maps)**
- **Aerial view / maps**



PROCESS DESCRIPTION

Process description

3.6 SPB.107: Organisation insurance obligation

The finance and human resources department is responsible for the insurance. This is done together with an insurance broker at senior management level. The insurances are controlled and renegotiated annually.

| Responsible | Process flowchart | Input | Tasks, activities, Descriptions, tools | Output |
|-------------|---|------------------------------|--|--------------------|
| E D M I | <pre> graph TD Start([SPB.107 Organisation insurance]) --> Check[Check insurance] Check --> Decision{Changes needed} Decision -- yes --> Conclude[Conclude new insurance] Conclude --> Start Decision -- no --> Start </pre> | existing insurance, annually | Insurance checks on term, premiums | Decision bases |
| LIP COO | | Basis for decisions | Decide if adjustment needed | decision |
| CEO | | Insurance requirements | Complete or adjust insurance | insurance policies |

The module Process description brings order to your document structure as a management tool, clarifies responsibilities and enables you to electronically map your business processes.

COCKPIT

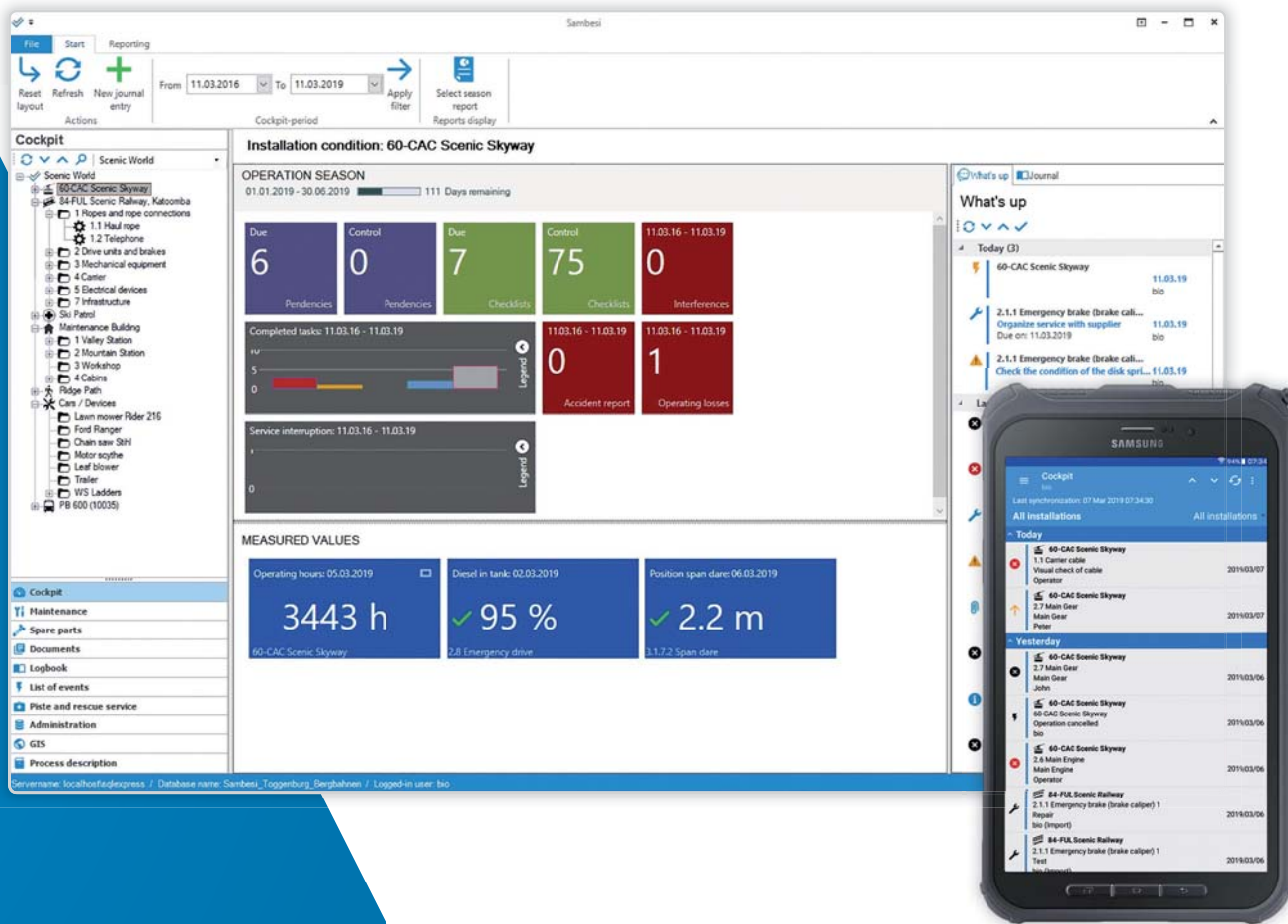
The cockpit provides you with all relevant installation data at a glance. Keep pending trends, pending checklists, disturbances and important metrics under control.

INSTALLATION STATE

The Cockpit module provides an overview of the installation status. The tiles can be placed freely and switched on or off. With one click, you can easily switch to the detailed view of the corresponding module.

MEASURED VALUES

The most important measured values can be displayed and monitored. Limit overruns are signaled immediately and you can navigate to the details of the measured values with one simple click.





STAY UPDATED REGARDING TECHNOLOGY!

Your advantages with SambesiMobile

- Data collection for maintenance and events takes place directly on site.
- Use of offline mode possible as automatic synchronization takes place once system is online.
- Better employee management with optimized checklists, grouped by service, process or location.
- Information always available and accessible at any location (schemes, plans, pictures).
- Minimization of paperwork and administration.
- Encourage the motivation of employees by using modern technologies.
- Easy handling of complex installations thanks to **NFC** identification.



Headquarters Switzerland

Remec AG
Bahnhofstrasse 69
CH-6460 Altdorf
Telephone +41 41 500 39 11
www.remec.ch

Representation Austria

Remec AG
Unterwasser 37
A-6384 Waidring
Telephone +43 650 919 82 19
www.remec.eu

